

Building sustainable and holistic buildings & communities

Lacol Arquitectura Cooperativa | Cristina Gamboa | 251010-climate KIC



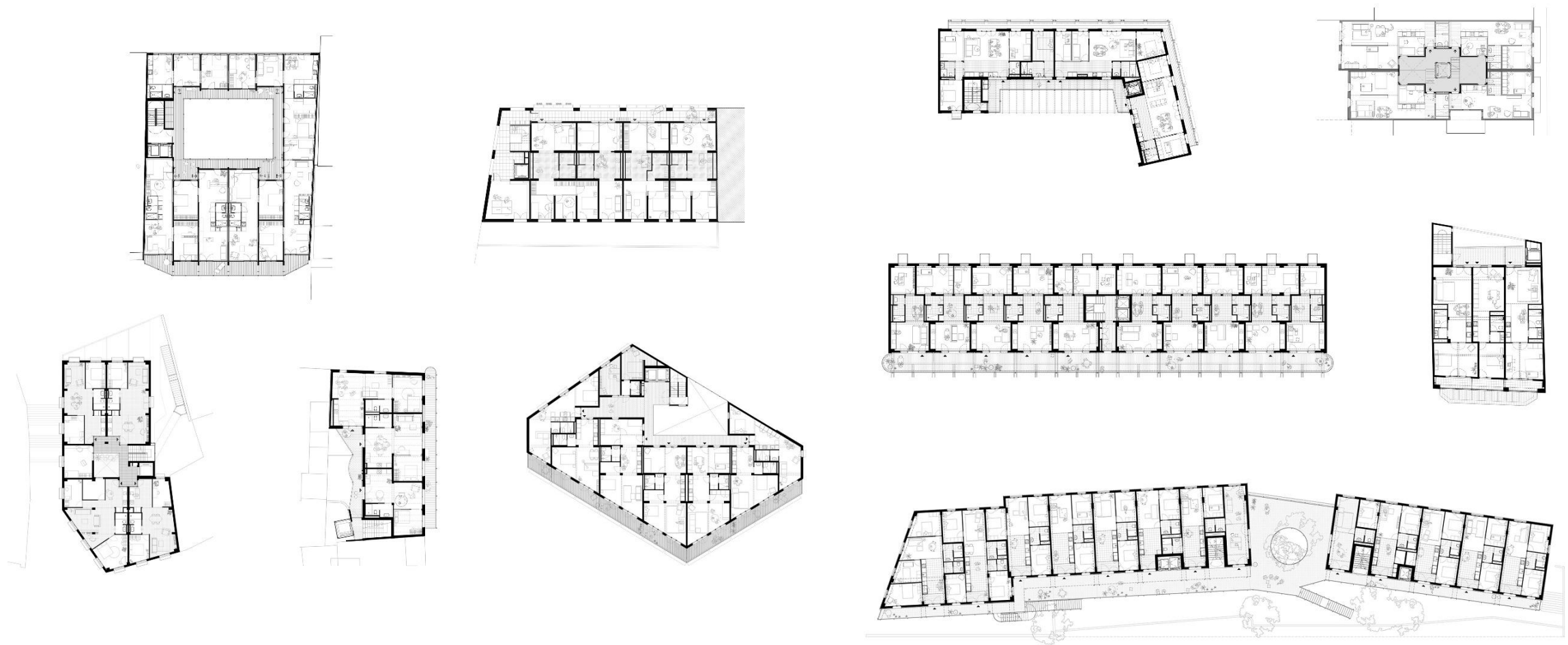
holon

Community led housing & sustainable
transitions
10 October 2025, 09:30 – 15:00
BLOC4, Carrer de la Constitució, 19,
Sants-Montjuïc, 08014 Barcelona



Round table discussion 30'

- Participants introduction -quick round-
- Potencial(s) of cooperative architecture
- Discussion



Taxonomy of floor plans, built and in-progress projects





opportunity spaces (from architecture). drivers of change

- Social dimension
- Environmental dimension
- Economic dimension

‘Building towards sufficiency’

- Social dimension
- Environmental dimension
- Economic dimension

Social Dimension.

- User participation and context
- Program and coexistence model
- Public–community–private transition
- Typological flexibility and adaptability
- Gender perspective
- New typologies and regulations

Environmental Dimension.

- Awareness and shared values (habit change)
- Demand reduction and program
- Active and passive strategies (user's role)
- Construction systems and requirements
- Monitoring and follow-up

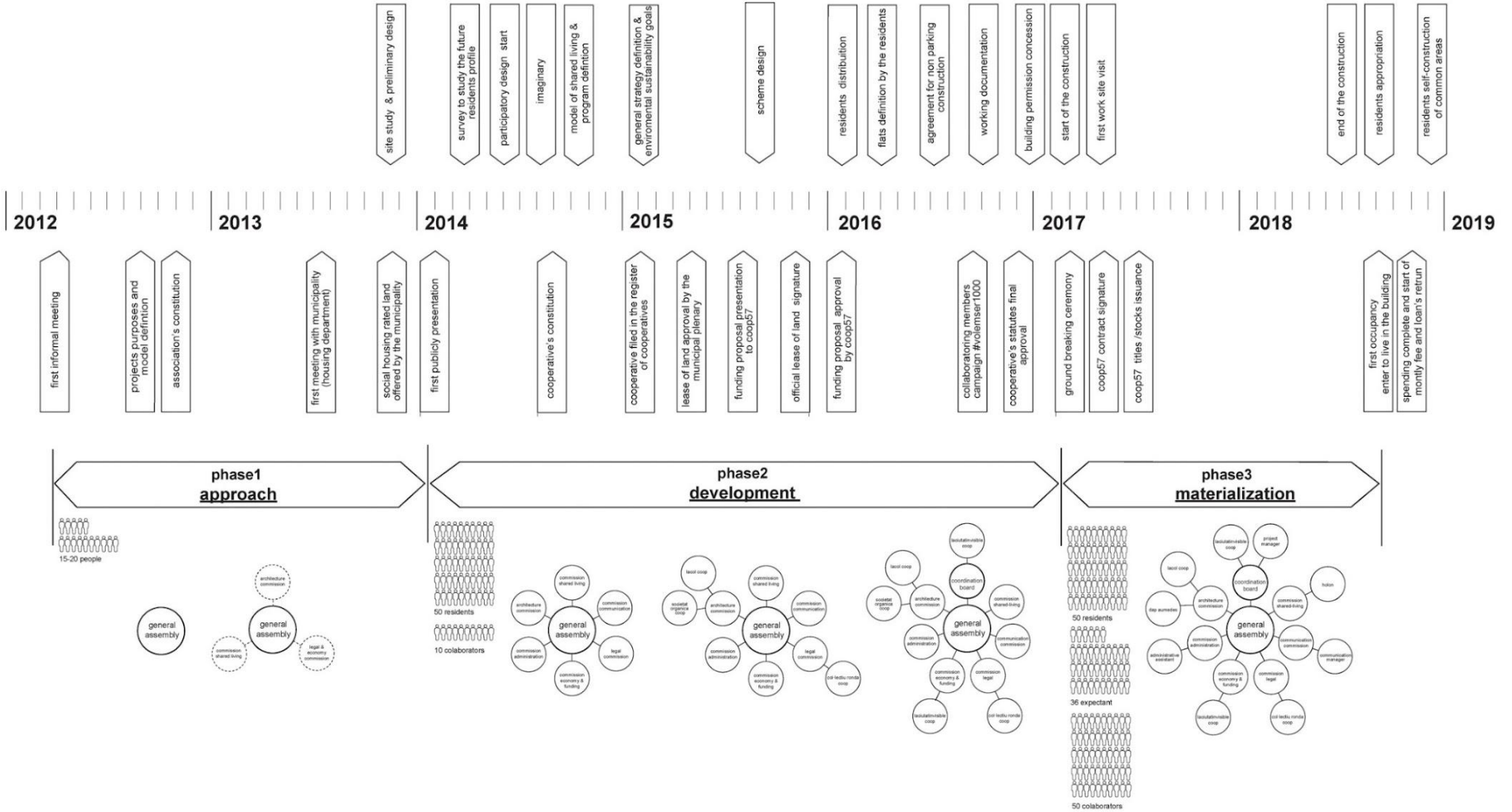
Economic Dimension.

- Cross-cutting approach
- Dual perspective: construction and useful life
- Definition of program and needs as a saving strategy
- Rethinking standards
- Construction phases,
- Self-construction

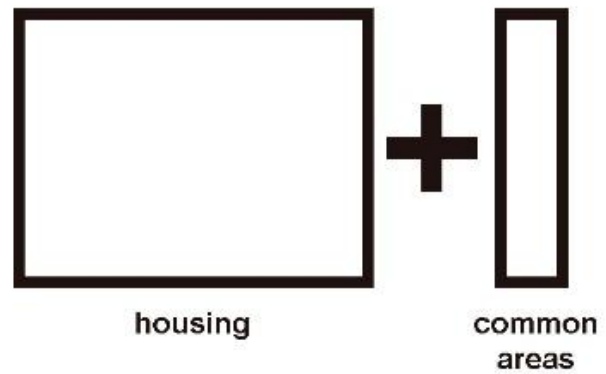
architectural development & construction

legal & financial development

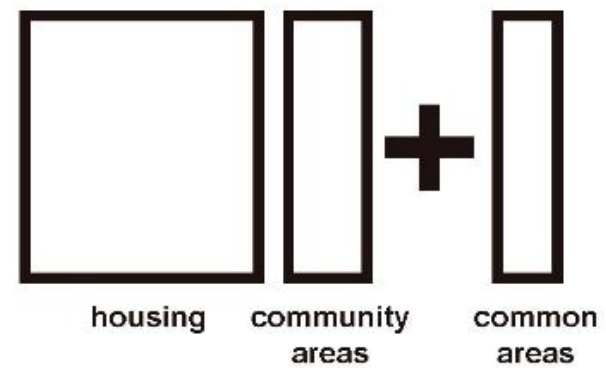
organisational development



**% conventional
housing project**



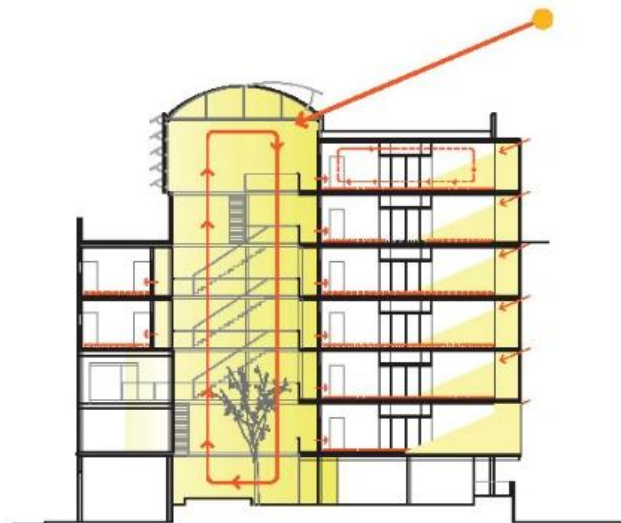
**% cooperative
housing project**



ESPRONCEDA 131

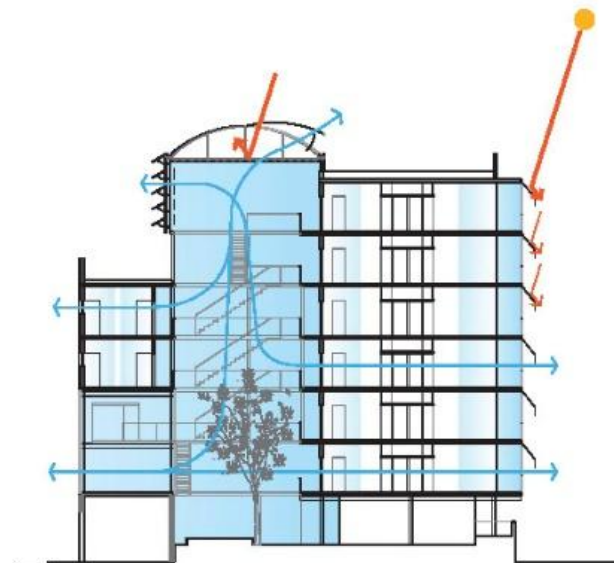






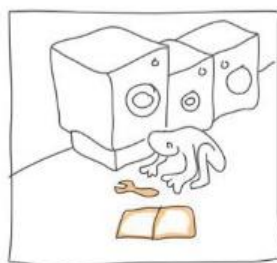
HIVERN

- .hivernacle tancat per reduir pèrdues (obertures puntuals amb sensor control CO2).
- .renovació aire atemperat pels habitatges.
- .galeries (doble pell) + sòcol radiant + inèrcia

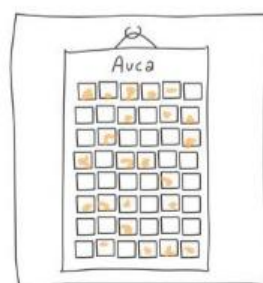


ESTIU

- .hivernacle obert per dissipar + protecció solar
- .galeries obertes + protecció solar
- .ventilació creuada als habitatges
- .vegetació



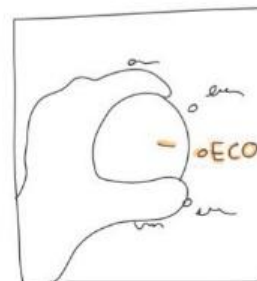
Que bé que hàgim guardat les millors rentadores i amb les altres comprat una industrial. Ah! i que en manetes del Pol les instal·li amb l'ajut dels tècnics.



Quina gràcia això de l'Auca de la Bugaderia, no hi ha qui es perdi!



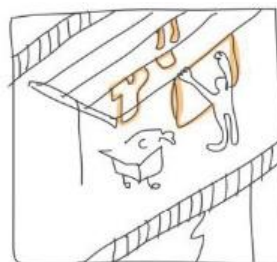
Qué bé, hi ha lloc per demà a la tarda!



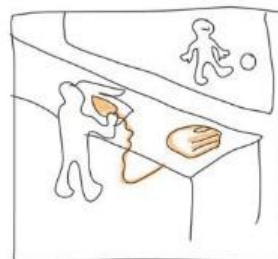
Un programa ràpid que he de marxar a entrenar



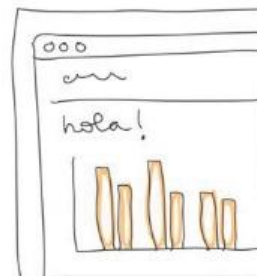
Síraaa! sí!.. pujo a estendre i marxem. Diga-li-hi al Lluç que s'espavili!



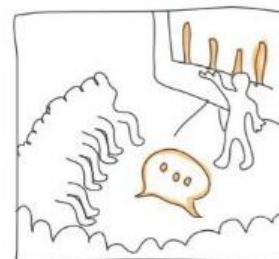
Ep, ja hi tornem, el monstre de les pínces està on fire!



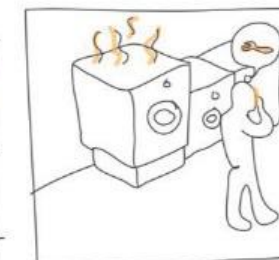
Joséé, donde pueda ver-te!



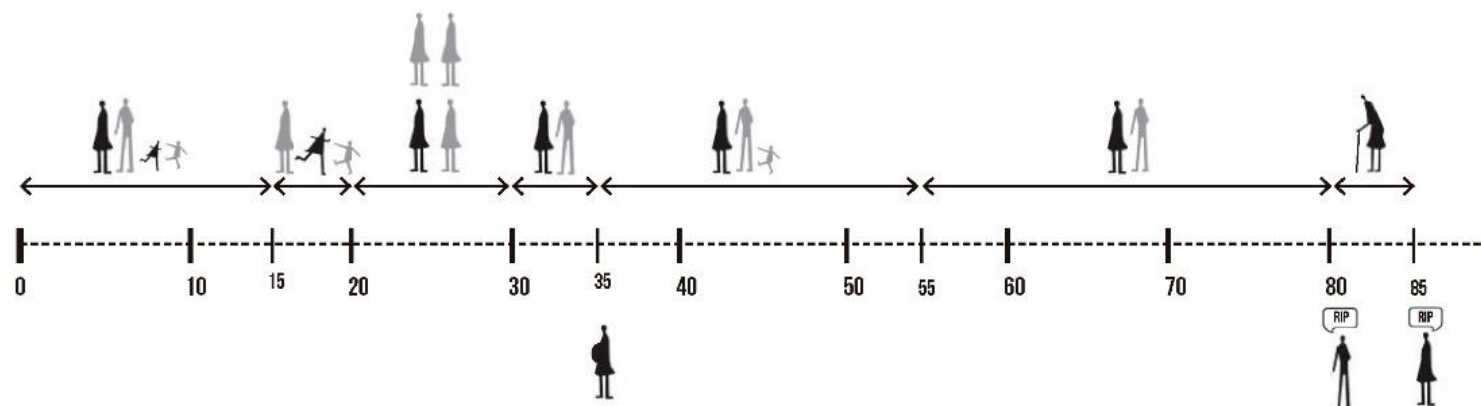
Ueeeee, hem baixat els consums i a sobre per sota de la mitjana!



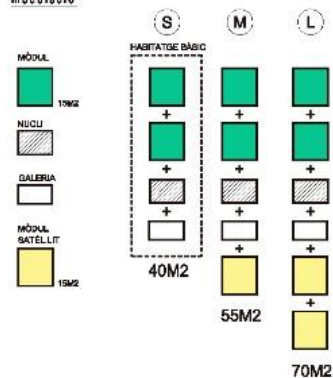
A mi m'agradaria que els torns fossin de 2 hores, pero que si algú de després no hi nirà poder-ho saber per aprofitar-ho



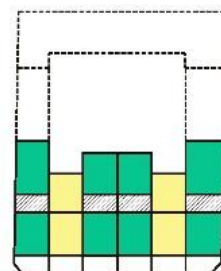
Hola, li truco de la Borda, que se'ns ha espatllat una rentadora i l'hem estat mirant de reparar i no ens en sortim.



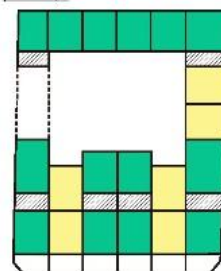
MATRIU. REGLES DEL JOC. modulació



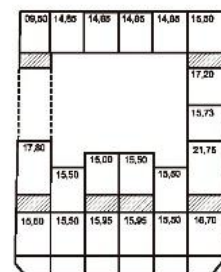
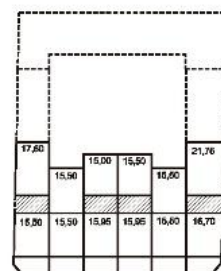
PATRÓ. ESQUEMA GENERAL planta 1, 2, 5, 6



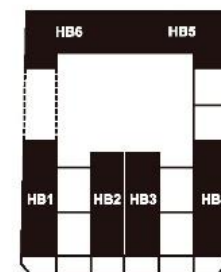
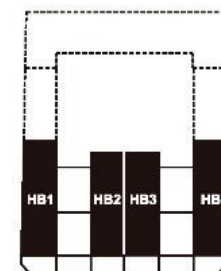
planta 3, 4



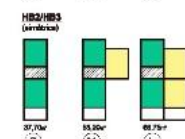
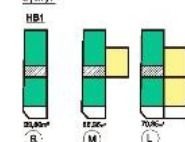
SUPERFÍCIE ÚTIL per mòdul



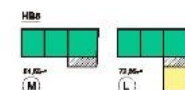
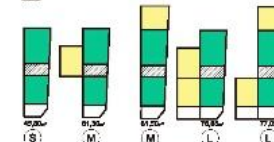
NOMENCLATURA habitatge (HB)



VARIACIONS TIPOLOGIQUES s.m.l

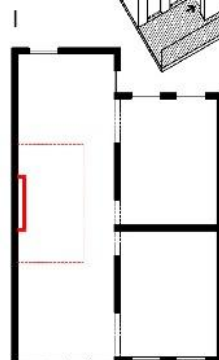
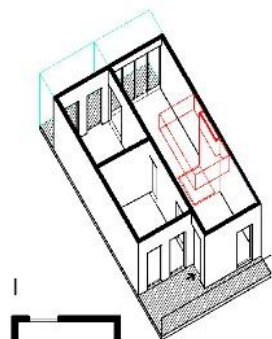


HB4



HB6

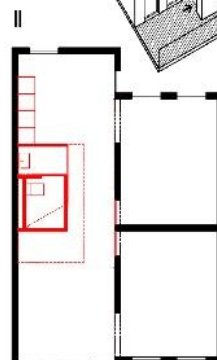
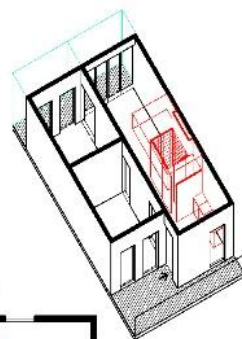




I

INFRAESTRUCTURA

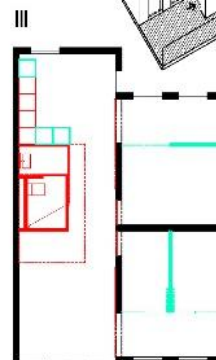
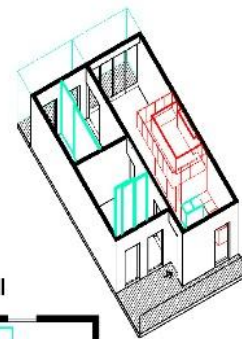
DEFINIT PELS SÒCIS PROMOTORS
DE LA BORDA, PENSANT A 75 ANYS



II

ELECCIÓ D'OPCIÓNS

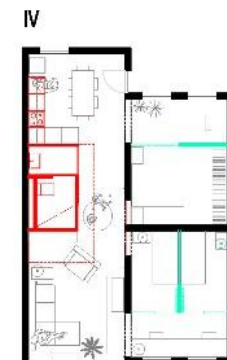
SELECCIONAT PER CADA UNITAT
EN EL DISSENY



III

APROPIACIÓ USUARI

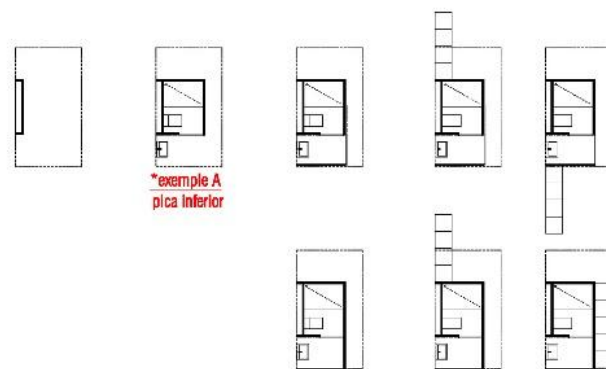
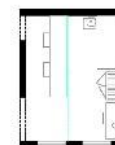
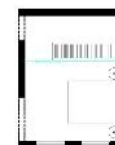
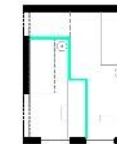
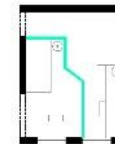
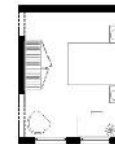
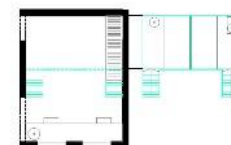
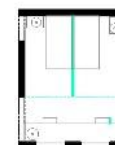
DECIDIT PER L'USUARI DURANT L'ÚS



IV

ÚS

*POSSIBILITATS DE
COMPARTIMENTACIÓ
(O DISTRIBUCIÓ)



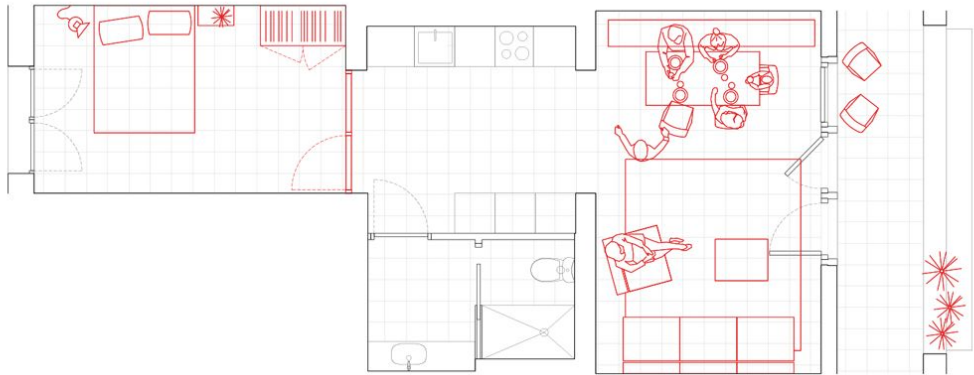
*exemple A
pica inferior

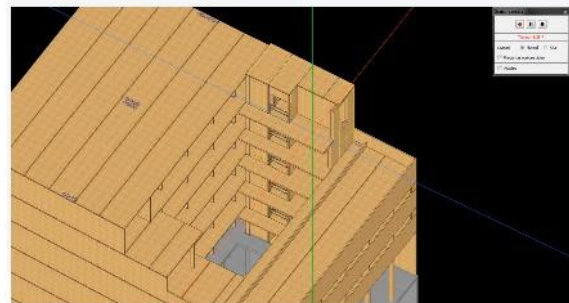
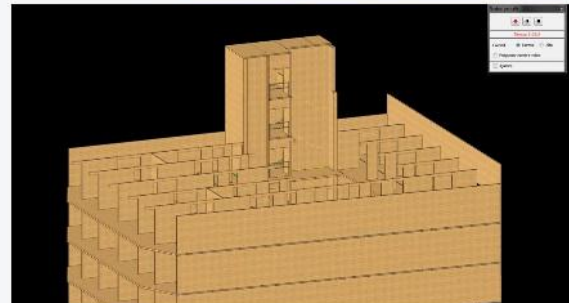
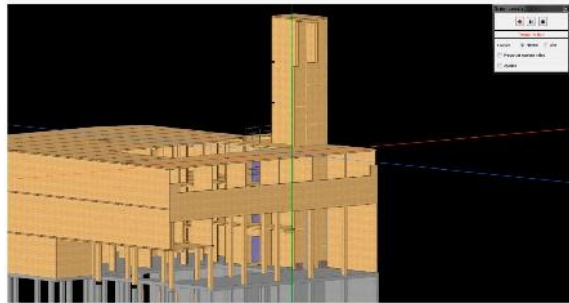
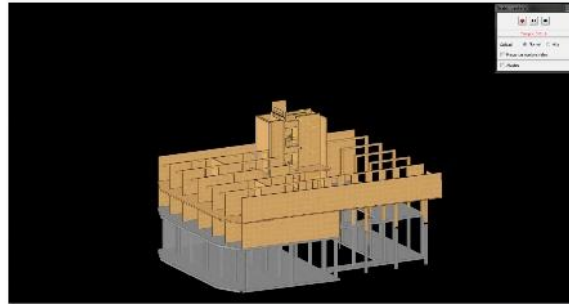
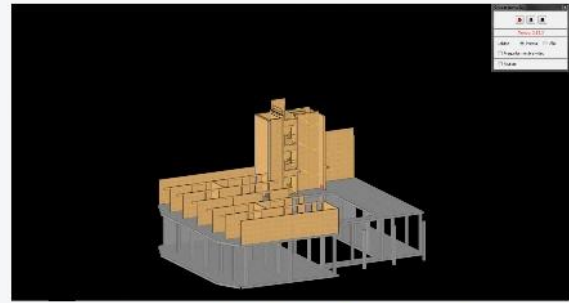
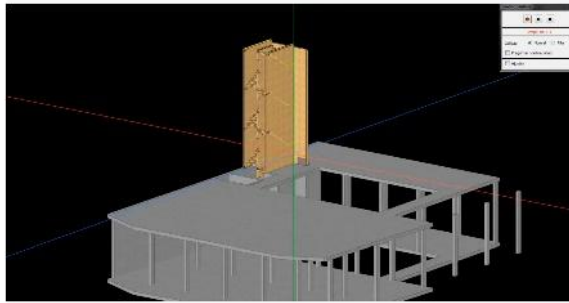
PAS INSTAL·LACIONS
+ FALS SOSTRE

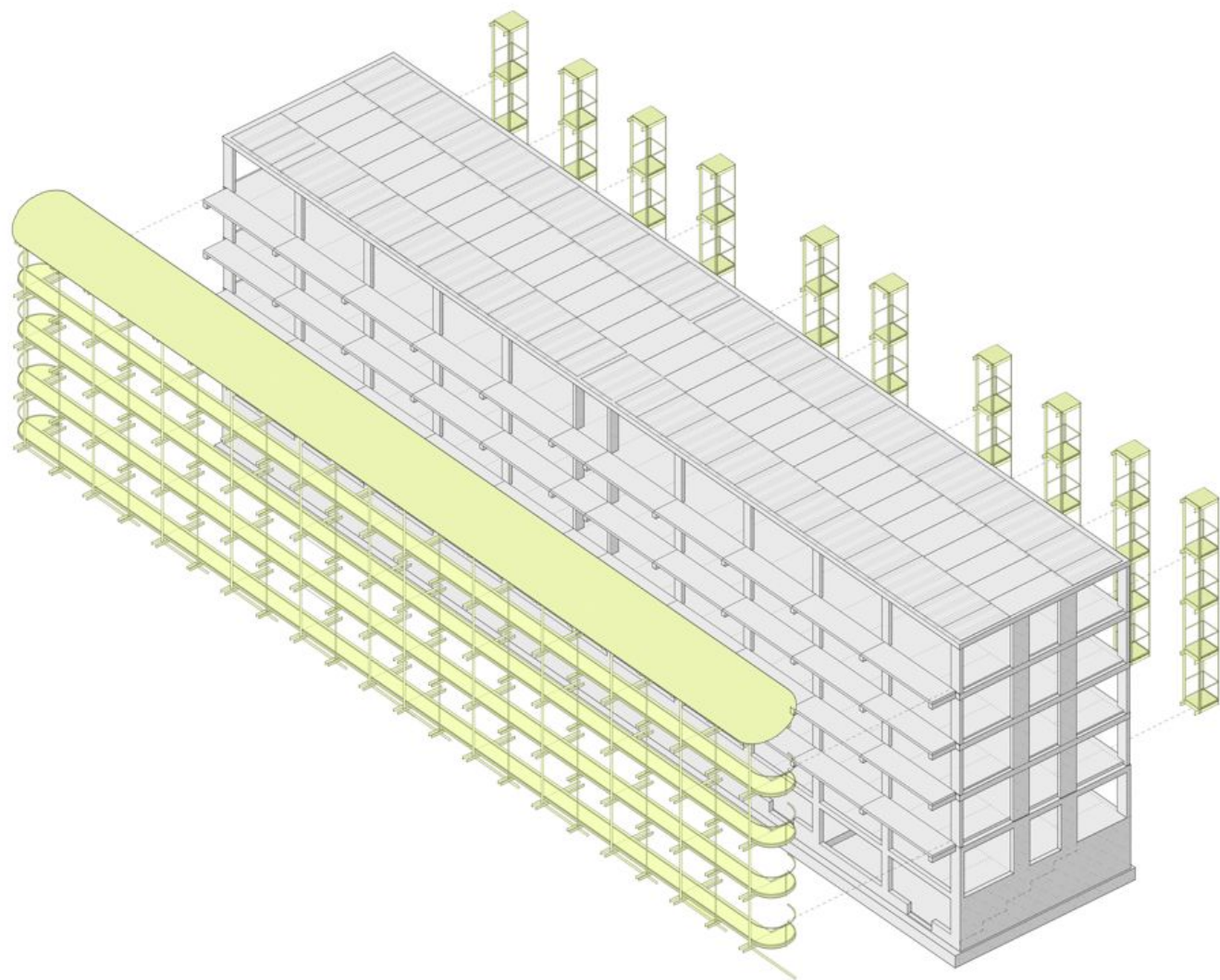
1r
POSICIÓ PICA:
Inferior/superior

2n
POSICIÓ TANCAMENT BANY
lateral/extern

3r
POSICIÓ CUNA
lateral/extern







1D









Implementation of new Measures,
Actions, Habit and Routines

